

## Description

SoundBoard 26 HD is a high mass composite acoustic wall lining system. At only 26mm thick this solution reduces the build-up of the wall when compared to alternative solutions where independent wall linings have to be installed.

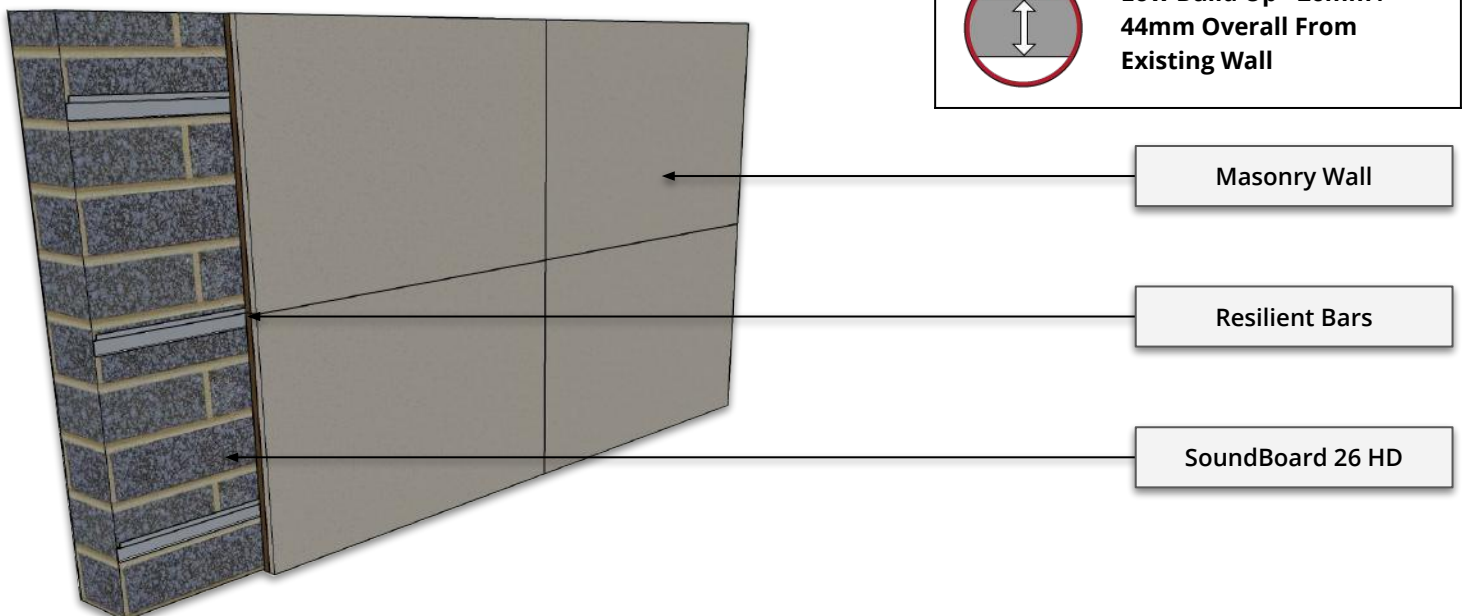
SoundBoard 26 HD is manufactured from a 16mm high density cement fibre reinforced board, which is factory bonded to a high performance 10mm wood fibre absorption board. The 16mm high density cement fibre face has high impact resistance and can also support greater loads than standard plasterboard walls with standard fixings. The boards are available in 2400mm x 1200mm or 1200mm x 1200mm sizes dependant on your project requirements.

For optimum acoustic performance the SoundBoard 26 HD should be fixed to resilient bars or if space is at a premium the boards can be fixed directly to the wall.



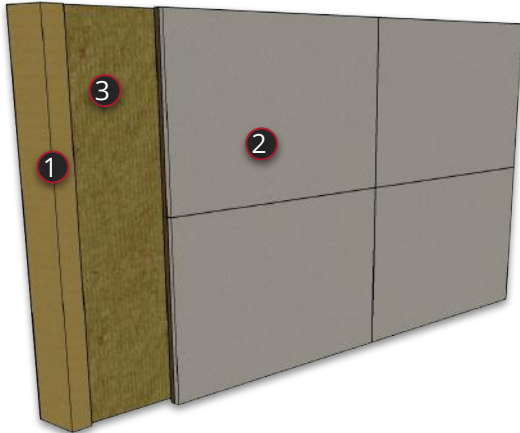
Technical Properties	
Board Dimension	2400mm (W) x 1200mm (L) x 26mm (H)
Board m <sup>2</sup>	2.88 m <sup>2</sup> Per board
Board Weight	24.5Kg/m <sup>2</sup> - 70.56/35.28 Kg per board
Pallet Dimensions	2400mm (W) x 1200mm (L) x 850mm (H)
Boards Per Pallet	25 Boards / 72 m <sup>2</sup>
Pallet Weight	1764/882 Kg

Key Benefits	
	<b>High Surface Impact Performance</b>
	<b>Robust Absorption Backing Board (Will Not Compress Under Loading)</b>
	<b>Can Support x5 As Much Weight vs Standard Plasterboard</b>
	<b>Low Build Up - 26mm / 44mm Overall From Existing Wall</b>



## Typical Acoustic Performances

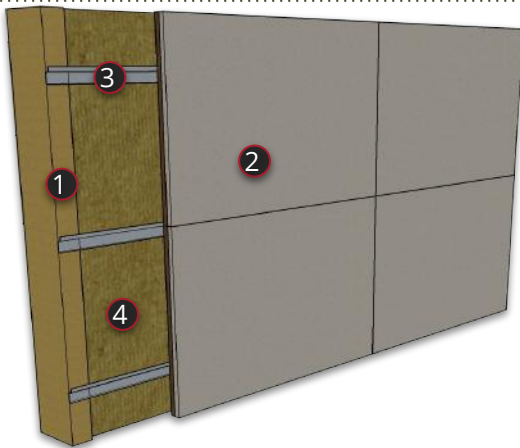
Manufactured By Soundis



### Directly Fixed To Timber Stud Partition

1. Timber Stud Partition
2. SoundBoard 26 HD
3. Mineral Wool

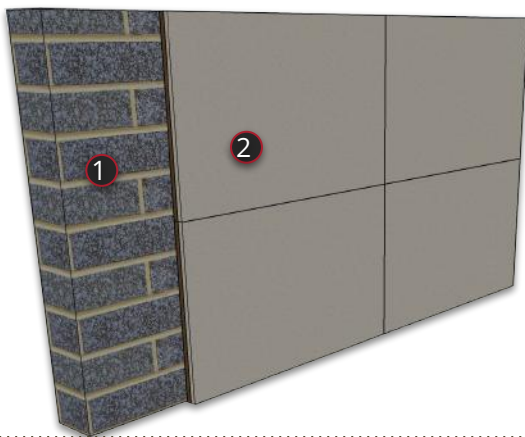
Rw
52dB
Rw + Ctr
45dB



### Fixed To Resilient Bar On Timber Stud Partition

1. Timber Stud Partition
2. SoundBoard 26 HD
3. Resilient Bars
4. Mineral Wool

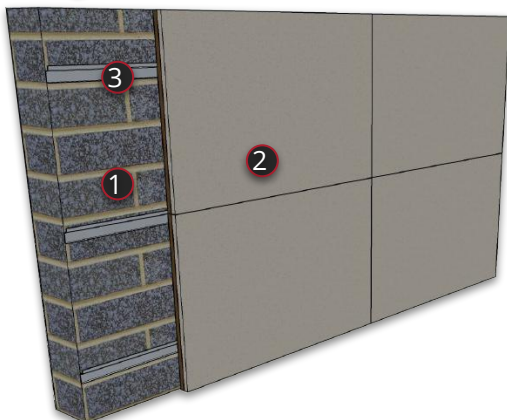
Rw
56dB
Rw + Ctr
49dB



### Directly Fixed To Existing Masonry Wall

1. Masonry Wall
2. SoundBoard 26 HD

Rw
52dB
Rw + Ctr
45dB



### Fixed To Resilient Bar On Existing Masonry Wall

1. Masonry Wall
2. SoundBoard 26 HD
3. Resilient Bars

Rw
55dB
Rw + Ctr
48dB