



Absorb-R GypLine αw



Datasheet



Absorb-R GypLine aw

Product Description

Absorb-R GypLine aw is an extremely flexible seamless sound absorption system. It is a non-perforated, continuous acoustic lining consisting of a mineral fibre panel with micro-porous plaster made from porous natural ground stone. GypLine aw is a flexible panel and behaves as a membrane absorber providing excellent sound absorption through the entire frequency range. It is **non-combustible** (A2-s1, d0) and can be installed on flat, horizontal, vertical and pitched surfaces, vaulted ceilings and surfaces with irregular forms. It can be used to line areas with infinite areas without joints.

The name GypLine aw evokes the functionality of the product. **Absorb-R GypLine aw** acoustic wall and ceiling seamless spray system has a structure that once applied acts as a membrane absorber reducing sound reflections making this product an excellent sound absorber. GypLine aw dampens noise, absorbs airborne noise thus contributing to restful acoustics within educational, leisure, residential, industrial and public spaces.

This **seamless** and complete solution can be adapted to a wide range of rooms, from home use, office space to conference halls, auditoria, theatres, recreational sports and educational areas. The Absorb-R GypLine aw acoustic system is environment friendly, fully recyclable and has natural components that offer optimal sound absorption with extensive resistance to fire. Surface applications include ceiling and wall coverage.

Absorb-R GypLine aw is a high performing versatile sound absorbing seamless system, a system with excellent eco credentials. GypLine aw insulation board benefits the energy performance of any building by enhancing the insulation of the building envelope. GypLine aw is a contributing element of the exterior walls and/or the roof/ceiling assembly. Thermal Conductivity (ASTM C-177 @ 75 F on 6.0 PCF 0.22)



Applications

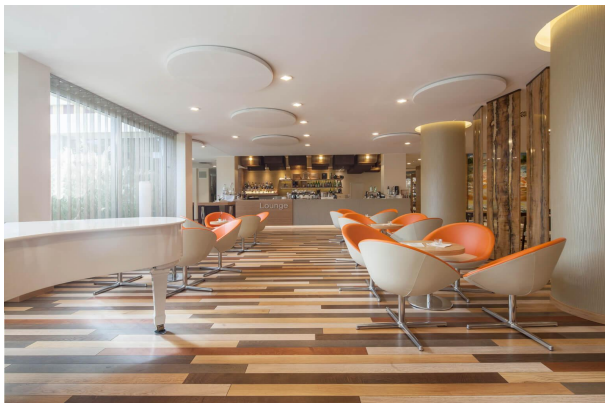
Absorb-R GypLine aw is suited for installation in conference halls, atria, classrooms, libraries, restaurants, bars, business areas and offices.

- Leisure Facilities
- Music Studios
- Showrooms
- Learning Areas
- Schools
- Music Venues
- Conference Centres
- Restaurants
- Hotels
- Other

Hotels



Leisure Facilities



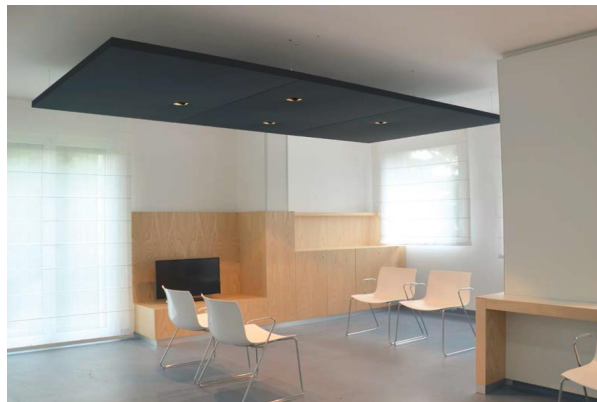
Restaurants



Learnings Areas



Conference Centres



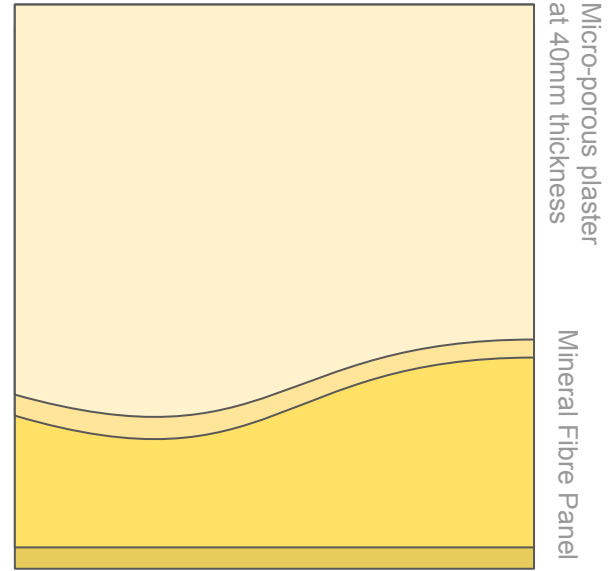
Absorb-R GypLine aw

Design Your Space

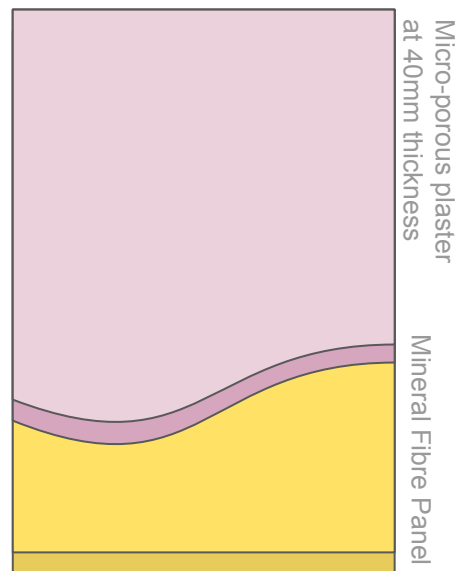
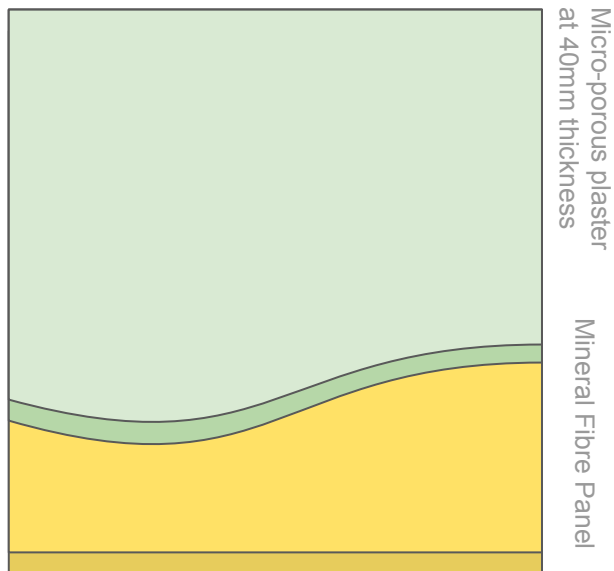
Our experienced team have a wealth of knowledge and can provide consultants, architects and contractors with expert advice on all aspects of reverberation control. We can perform noise surveys and will provide details of anticipated reverberation time improvements to help ensure that the maximum design specifications and performance can be achieved.

Panel Finish & Colour

A large selection of colours available and can be picked from colour systems such as BS, NCS and RAL.



1000 Green Beige	1001 Pale Beige	1002 Sand Yellow						
1003 Signal Yellow	1004 Dark Golden Yellow	1005 Honey Yellow	1006 Maize Yellow	1007 Chrome Yellow	1011 Brown Beige	1012 Lemon Yellow	1013 Pearl White	
1014 Dark Ivory	1015 Light Ivory	1016 Sulphur Yellow	1017 Saffron Yellow	1018 Zinc Yellow	1019 Grey Beige	1020 Olive Yellow	1021 Cadmium Yellow	
1023 Traffic Yellow	1024 Ochre Yellow	1027 Curry Yellow	1028 Mellon Yellow	1032 Broom Yellow	1033 Dahlia Yellow	1034 Pastel Yellow	2000 Yellow Orange	
2001 Red Orange	2002 Vermillion	2003 Pastel Orange	2004 Pure Orange	2008 Light Red Orange	2009 Traffic Orange	2010 Signal Orange	2011 Deep Orange	
2012 Salmon Orange	3000 Flame Red	3001 RAL Signal Red	3002 Carmine Red	3003 Ruby Red	3004 Purple Red	3005 Wine Red	3007 Black Red	
3009 Oxide Red	3011 Brown Red	3012 Beige Red	3013 Tomato Red	3014 Antique Pink	3015 Light Pink	3016 Coral Red	3017 Rose	
3018 Strawberry Red	3020 Traffic Red	3022 Dark Salmon Red	3027 Raspberry Red	3031 Orient Red	4001 Red Lilac	4002 Red Violet	4003 Heather Violet	
4004 Claret Violet	4005 Blue Lilac	4006 Traffic Purple	4007 Purple Violet	4008 Signal Violet	4009 Pastel Violet	4010 Telemagenta	5000 Violet Blue	
5001 Green Blue	5002 Ultramarine Blue	5003 Dark Sapphire Blue	5004 Black Blue	5005 Signal Blue	5007 Brilliant Blue	5008 Grey Blue	5009 Light Azure Blue	
5010 Gentian Blue	5011 Steel Blue	5012 Light Blue	5013 Dark Cobalt Blue	5014 Pigeon Blue	5015 Middle Sky Blue	5017 Traffic Blue	5018 Turkish Blue	

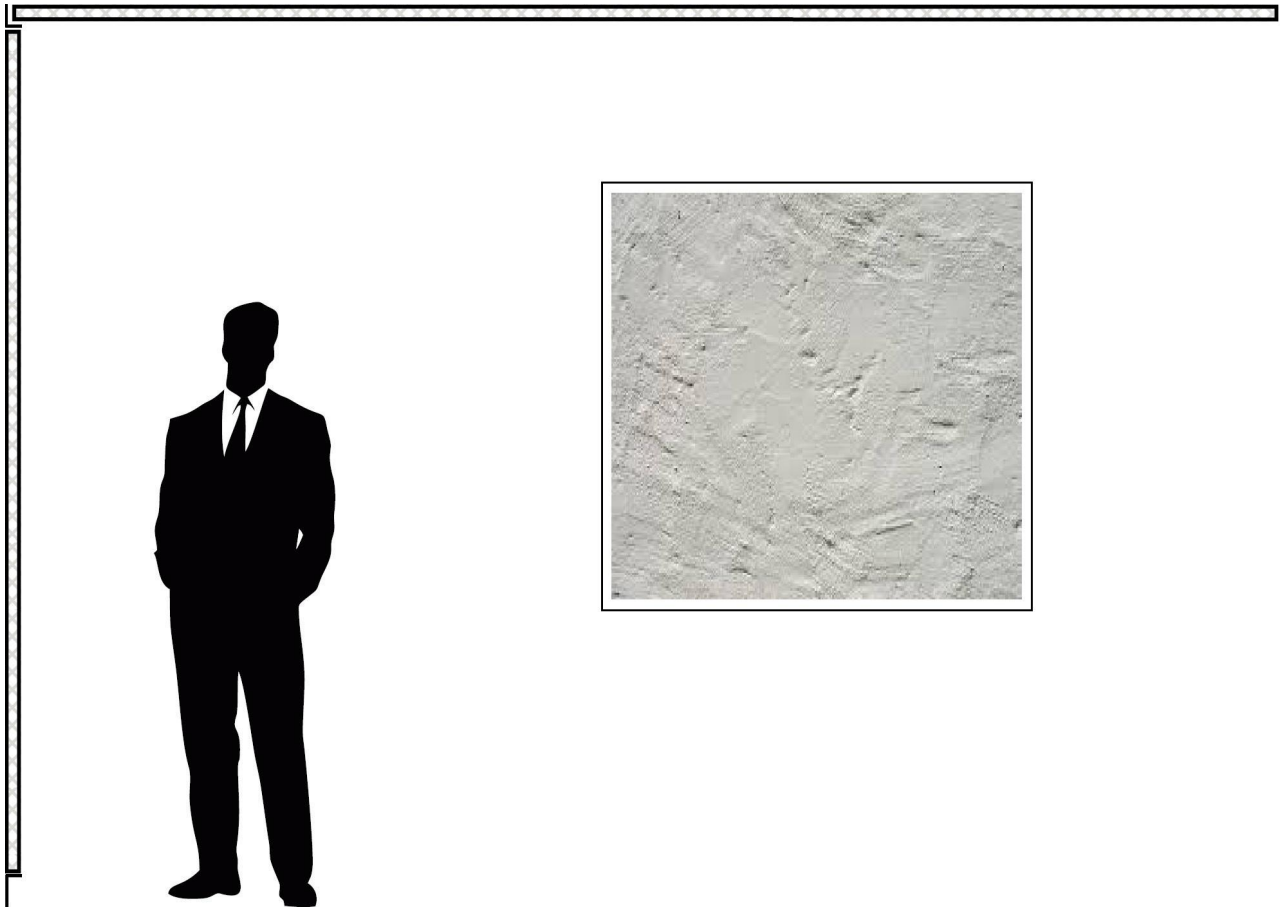


5019 Capri Blue	5020 Ocean Blue	5021 Water Blue	5022 Night Blue	5023 Fern Blue	5024 Pastel Blue	6000 Patine Green	6001 Middle Emerald Green
6002 Leaf Green	6003 Middle Olive Green	6004 Blue Green	6005 Light Moss Green	6006 Grey Olive	6007 Bottle Green	6008 Brown Green	6009 Fir Green
6010 Middle Grass Green	6011 Reseda Green	6012 Black Green	6013 Reed Green	6014 Yellow Olive	6015 Black Olive	6016 Turquoise Green	6017 Pastel Green
6018 Yellow Green	6019 Pastel Green	6020 Chrome Green	6021 Pale Green	6022 Brown Olive	6024 Traffic Green	6025 Bracken Green	6026 Opal Green
6027 Turkish Green	6028 Pine Tree Green	6029 Mint Green	6032 Signal Green	6033 Turquoise Blue	6034 Pale Turquoise	7000 Dark Squirrel Grey	7001 Silver Grey
7002 Olive Grey	7003 Moss Grey	7004 Signal Grey	7005 Mouse Grey	7006 Beige Grey	7008 Khaki Grey	7009 Green Grey	7010 Tarpaulin Grey
7011 Iron Grey	7012 Basalt Grey	7013 Brown Grey	7015 Slate Grey	7016 Anthracite Grey	7021 Black Grey	7022 Umber Grey	7023 Concrete Grey
7024 Graphite Grey	7026 Granite Grey	7030 Stone Grey	7031 Blue Grey	7032 Grey	7032 Cement Grey	7034 Yellow Grey	7035 Pale Grey
7036 Platinum Grey	7037 Dusty Grey	7038 Agate Grey	7069 Quartz Grey	7040 Window Grey	7042 Traffic Grey A	7043 Traffic Grey B	7044 Silky Grey

Other colours available upon request*

DISCLAIMER: Note that colours shown on this page offer only an approximation of their actual real-life counterparts. Refer to a certified colour chart for true colour.

Absorb-R GypLine aw



Field Conditions

Absorb-R GypLine aw works are not to commence until spaces are enclosed and weather tight, wet work in spaces is complete and dry, work at and above ceilings is complete. Maintain 15 - 32 degrees C (60 - 90 degrees F) ambient temperature and 70 percent relative humidity maximum. This condition should be maintained during and after the installation. Ventilate building space during acoustical finish application and until dry.

Care and Maintenance

Absorb-R GypLine aw panels are simple to maintain by wiping periodically. Repairing minor damage to walls and ceilings can be carried out without the need to completely replace the existing surface. Please enquire for further details.

Installation Types

Direct Fix: Either the spray GypLine aw plaster is applied directly to the substrate or a 25mm / 40mm thick high density mineral fibre board is applied to the substrate then GypLine aw is spray applied in two separate coats allowing the first coat to dry, the second coat should be applied once the base coat has been sanded.

Availability

Panels are available to order and should be fitted by skilled tradesmen or specialist contractors.

Acoustic Performance Data

Product Type	Sound Absorption Coefficient (tested in accordance with BS EN ISO 354)									Building Regulations Absorber Classification (In accordance with BS EN ISO 11654-1997)
	Octave Band (Hz)									
	Thickness (mm)	125	250	500	1k	2k	4k	α_w	NRC	
GypLine α_w	40	0.46	0.74	0.87	0.87	0.89	0.83	0.90	0.85	A
	25	0.15	0.69	0.62	0.88	0.92	0.78	0.85	0.80	B
	Direct Spray	0.05	0.20	0.50	0.80	0.80	0.65	0.60	0.58	C

