

**Description**


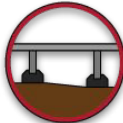
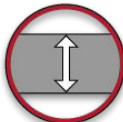
ChipPanel 37 is a triple layer composite panel for 'direct to joist' acoustic flooring applications. Consisting of an upper surface of 22mm P5 chipboard, a 5mm decoupling foam membrane within the centre, and an outer 10mm high density wood fibre resilient layer.

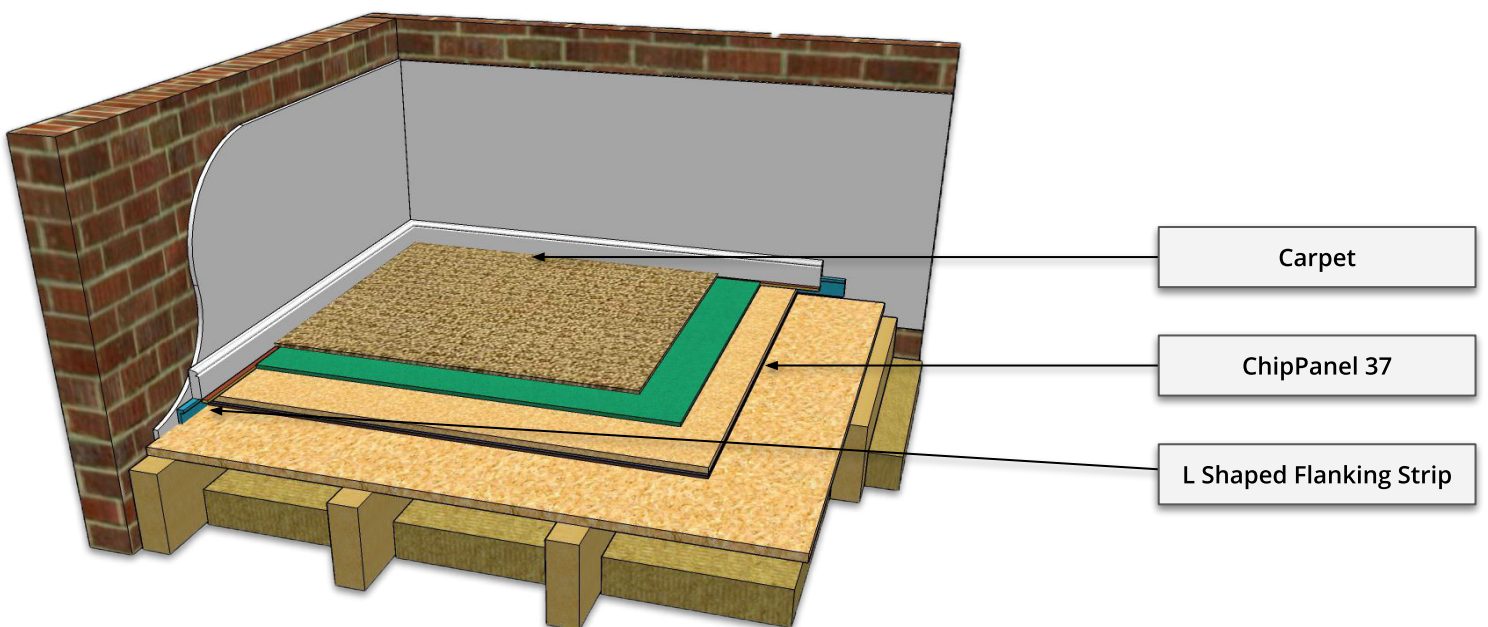
ChipPanel 37 saves both time and money by removing the need to lay a structural sub deck prior to installing a traditional 'floating' acoustic floor.

Manufactured and dispatched from Preston, UK.



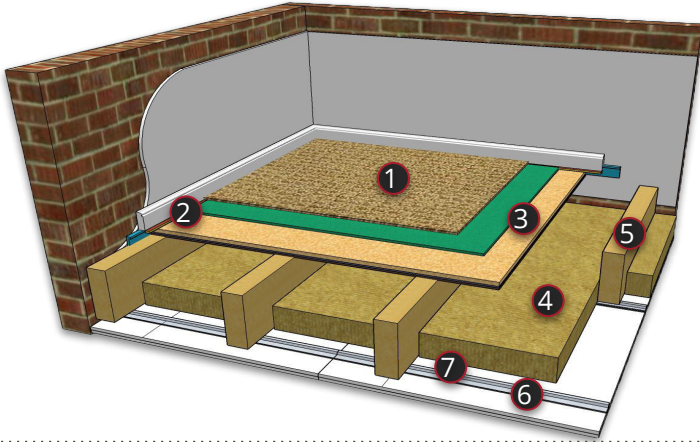
Technical Properties	
<b>Panel Dimension</b>	600mm (W) x 2400mm (L) x 37mm (H)
<b>Panel m<sup>2</sup></b>	1.44 m <sup>2</sup> Per Panel
<b>Panel Per Pallet</b>	40 Panels (57.6 m <sup>2</sup> )
<b>Weight</b>	17.3 kg/m <sup>2</sup> - 25 kg Per Panel
<b>Pallet Dimensions</b>	2400mm (W) x 1200mm (L) x 840mm (H)
<b>Pallet Weight</b>	1020 kg

Key Benefits	
	<b>High Density Resilient Layer</b>
	<b>Structural Floating Floor</b>
	<b>Low Build of 37mm From Joist</b>



Typical Acoustic Performances

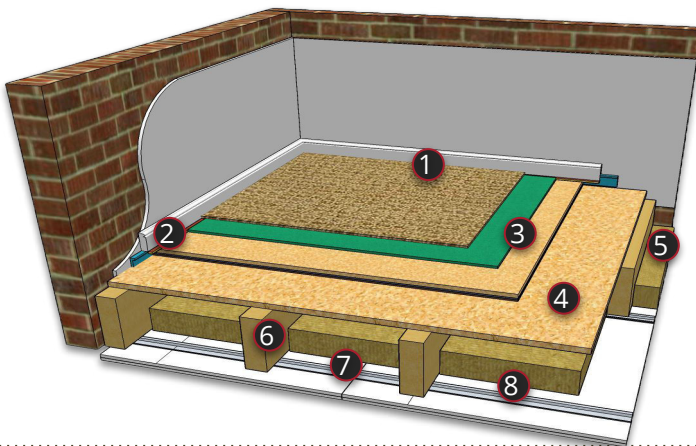
Manufactured By Soundis



**Timber Joisted Floor (Direct To Joist)**

1. Carpet
2. L Shaped Flanking Strip
3. ChipPanel 37
4. 100mm 45kg/m3 mineral wool
5. 225mm (min) timber floor joist
6. 16mm resilient bars
7. 2 x 15mm acoustic plasterboard

<b>DnT,w + Ctr</b>
51dB
<b>LnT,W</b>
54dB



**Timber Joisted Floor (Overlay On Timber Subfloor)**

1. Carpet
2. L Shaped Flanking Strip
3. ChipPanel 37
4. 18mm (min) OSB or Chipboard subfloor
5. 100mm 45kg/m3 mineral wool
6. 225mm (min) timber floor joist
7. 16mm resilient bars
8. 2 x 15mm acoustic plasterboard

<b>DnT,w + Ctr</b>
52dB
<b>LnT,W</b>
55dB