


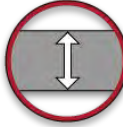

Description

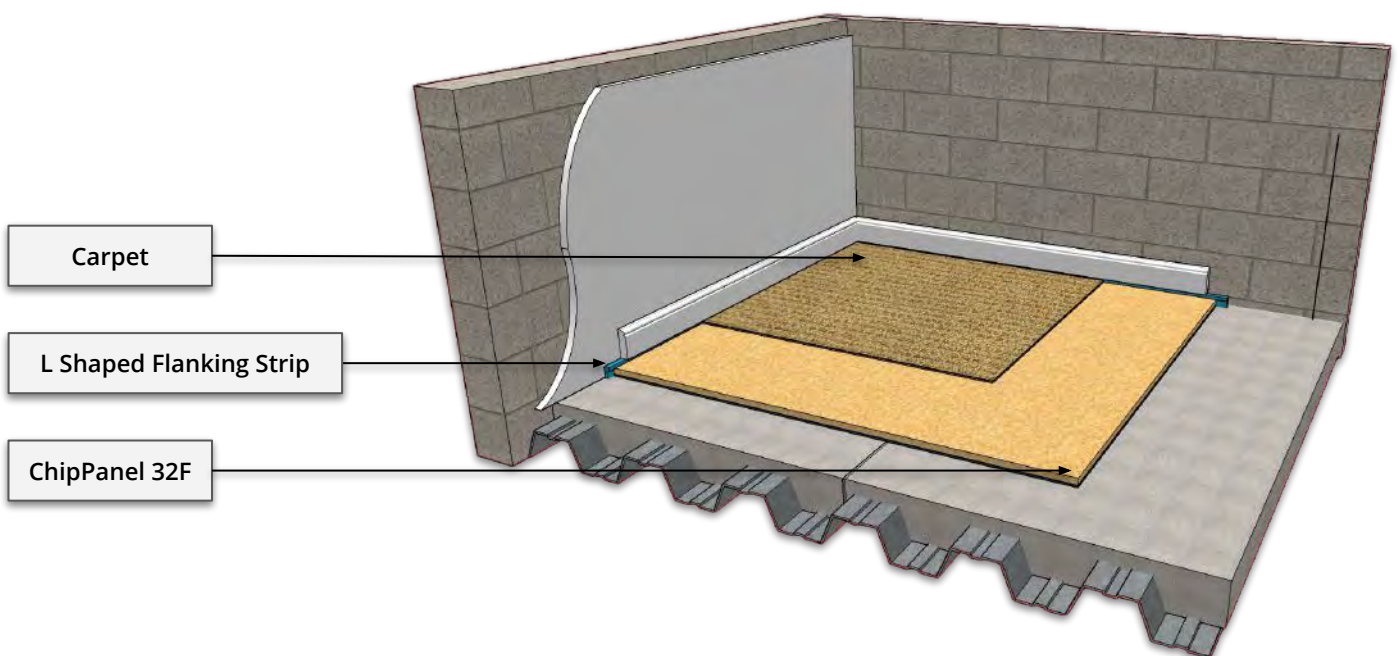
ChipPanel 32F is a composite acoustic overlay panel for use on timber floors in refurbishment projects or concrete subfloors in new build applications.

ChipPanel 32F is a cost effective solution for a multitude of applications. Improved impact sound performance is achieved through introducing a resilient layer to the floor by using a 22mm P5 chipboard, which is factory bonded to a high performance 10mm foam layer. Giving a ΔL_w performance of 18dB.



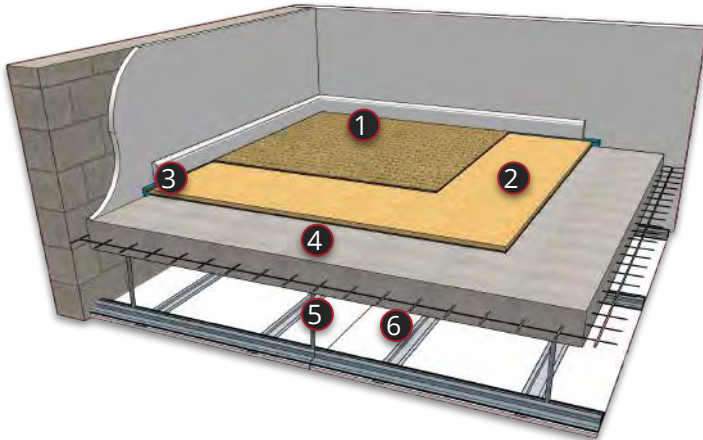
| Technical Properties | |
|----------------------------|---|
| Panel Dimension | 600mm (W) x 2400mm (L) x 32mm (H) |
| Panel m² | 1.44 m ² Per Panel |
| Panel Per Pallet | 70 Panels (100.8 m ²) |
| Weight | 13 kg/m ² - 18.72 kg Per Panel |
| Pallet Dimensions | 2400mm (W) x 1200mm (L) x 820mm (H) |
| Pallet Weight | 1310 kg |

| Key Benefits | |
|---|---|
|  | 22mm Chip Board Option For Spanning & Strength |
|  | Low Build Up of Only 32mm |
|  | Robust Detail Approved E-FC-1, E-FC-2, E-FS-1 |



Typical Acoustic Performances

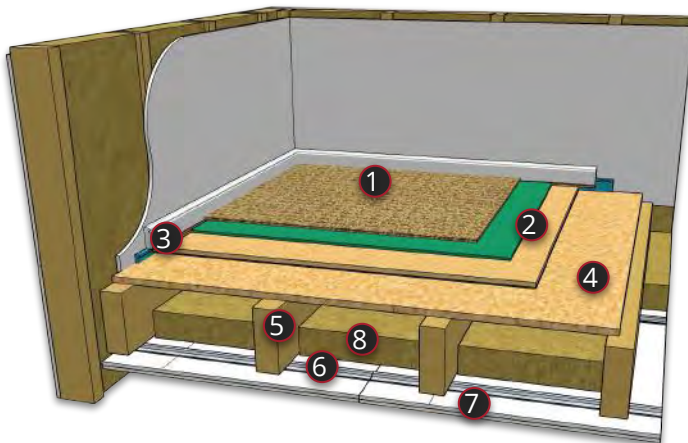
Manufactured By Soundis



Concrete Insitu Floor

1. Carpet
2. Soundis ChipPanel 32F
3. L Shaped Flanking Strip
4. 200mm Reinforced Insitu Concrete Slab
5. MF Ceiling (Minimum 100mm Void)
6. 1 x 9.5mm Acoustic Plasterboard

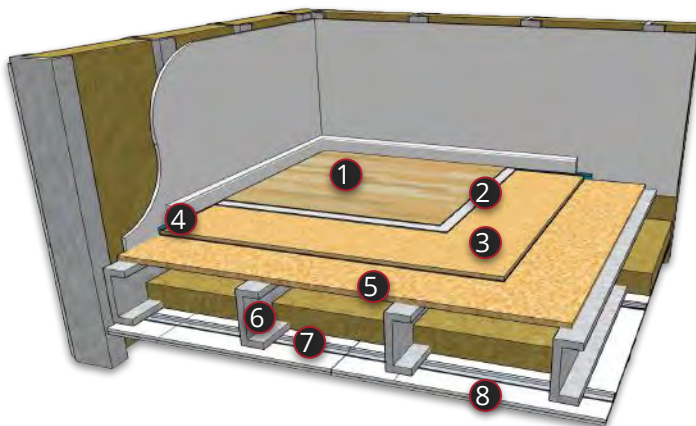
| | |
|-------------|------|
| DnT,w + Ctr | 51dB |
| LnT,W | 49dB |
| ΔLw | 21dB |



Timber Joisted Floor

1. Carpet
2. Soundis ChipPanel 32F
3. L Shaped Flanking Strip
4. 18mm (min) timber based sub floor
5. 225mm (min) timber floor joist
6. 16mm resilient bars
7. 2 x 15mm acoustic plasterboard
8. 100mm 45kg/m3 mineral wool

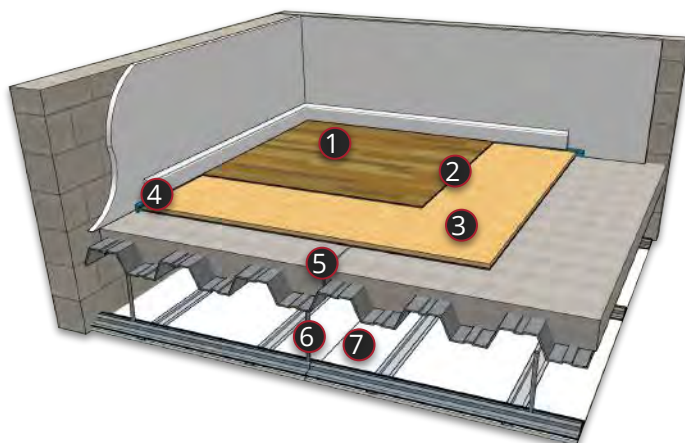
| | |
|-------------|------|
| DnT,w + Ctr | 50dB |
| LnT,W | 55dB |



Steel Joisted Floor

1. Engineered timber flooring
2. Self-levelling & adhesive layers
3. Soundis ChipPanel 32F
4. L Shaped Flanking Strip
5. 18mm (min) timber based sub floor
6. 225mm (min) Steel floor joists
7. 16mm resilient bars
8. 2 x 15mm acoustic plasterboard

| | |
|-------------|------|
| DnT,w + Ctr | 49dB |
| LnT,W | 55dB |



Profiled Metal Deck

1. Laminate flooring
2. Adhesive or decoupling layer
3. Soundis ChipPanel 32F
4. L Shaped Flanking Strip
5. 130mm concrete on profiled metal deck
6. MF ceiling (min 100mm void)
7. 1 x 9.5mm acoustic plasterboard

| | |
|-------------|------|
| DnT,w + Ctr | 51dB |
| LnT,W | 48dB |