

Description

Soundis ScreedPanel 28F is a composite panel for acoustic flooring applications, consisting of an upper surface of an 18mm fibre reinforced cement fibre panel factory bonded to a 10mm closed cell resilient layer. These dry fit screed replacement panels reduce floor height and save on drying times over traditional screeds.

Soundis ScreedPanel 28F is ideally suited for acoustic flooring applications where high levels of impact and airborne sound performance are required; such as residential, care homes and student accommodation schemes.



Technical Properties

Panel Dimension	600mm (W) x 1200mm (L) x 28mm (H)
Panel m²	0.72 m ² Per Panel
Panels Per Pallet	62 Panels (44.64 m ²)
Weight	24.5 kg/m ² - 17.64 kg Per Panel
Pallet Dimensions	1200mm (W) x 1200mm (L) x 1050mm (H)
Pallet Weight	1108 kg
Density	1350 kg/m ³
Thermal Expansion Coefficient	0.005 mm/mK
Thermal Conductivity	0.22 W/mK
Fire Performance	A1 (as per EN13051-1)
Water Impermeability	Impermeable according to EN 12467

Key Benefits



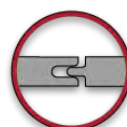
Can Be Laid Directly Without Decoupling Mat



Non-combustible



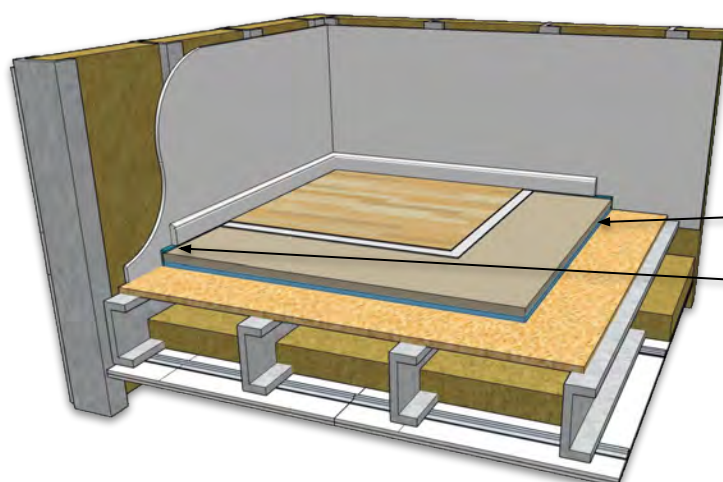
High Density



T&G No Screws Required



Impervious To Water

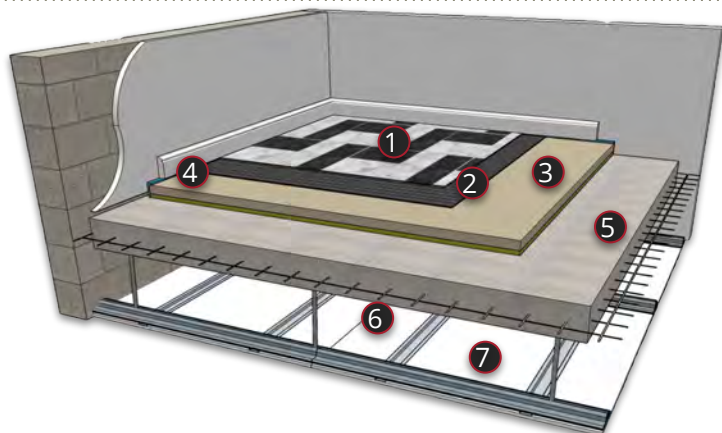


Soundis ScreedPanel 28F

L Shaped Flanking Strip

Typical Acoustic Performances

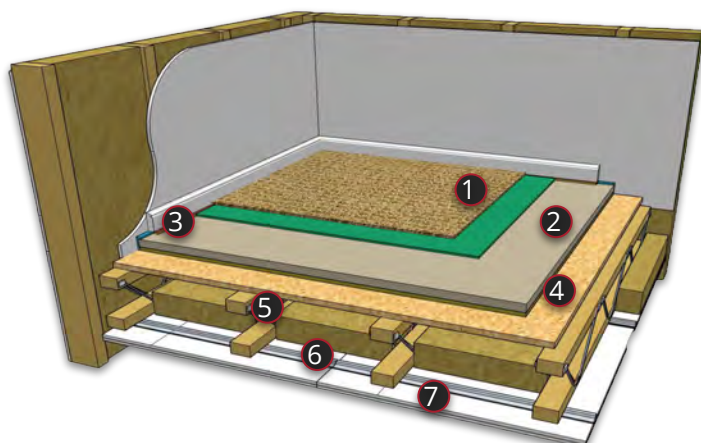
Manufactured By Soundis



Concrete Insitu Floor

1. Ceramic tiles
2. Electric UFH cables set in tile adhesive
3. Soundis ScreedPanel 28F
4. L Shaped Flanking strip
5. 200mm Reinforced insitu concrete slab
6. MF ceiling (min 100mm void)
7. 1 x 9.5mm acoustic plasterboard

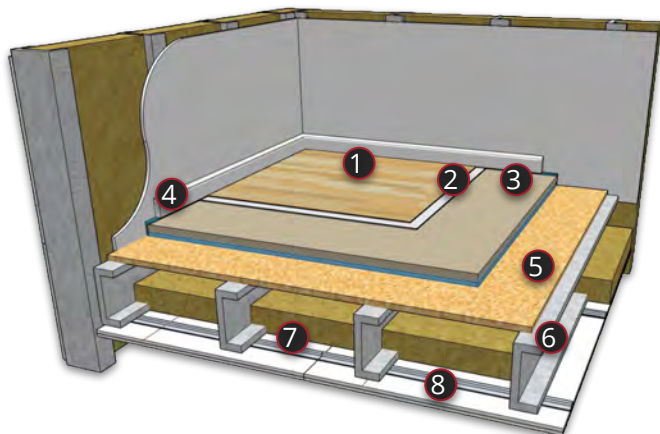
DnT,w + Ctr
50dB
LnT,W
49dB
ΔL_w
20dB



Timber Joisted Floor

1. Carpet & underlay
2. Soundis ScreedPanel 28F
3. L Shaped Flanking Strip
4. 18mm (min) OSB or Chipboard subfloor
5. 225mm (min) timber floor joist
6. 16mm resilient bars
7. 2 x 15mm acoustic plasterboard

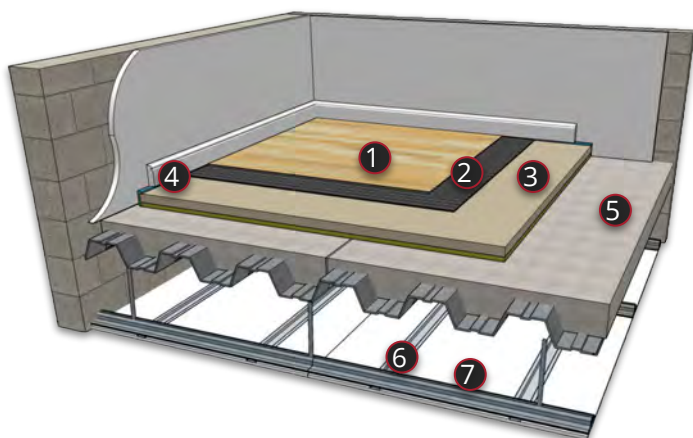
DnT,w + Ctr
49dB
LnT,W
58dB



Steel Joisted Floor

1. LVT or sheet vinyl flooring
2. Self-levelling & adhesive layers
3. Soundis ScreedPanel 28F
4. L Shaped Flanking Strip
5. 18mm (min) OSB chipboard subfloor
6. 225mm (min) steel floor joists
7. 16mm resilient bars
8. 2 x 15mm acoustic plasterboard

DnT,w + Ctr
52dB
LnT,W
57dB



Profiled Metal Deck

1. Engineer timber flooring
2. Adhesive or decoupling layer
3. Soundis ScreedPanel 28F
4. L Shaped Flanking Strip
5. 130mm concrete on profiled metal deck
6. MF ceiling (min 100mm void)
7. 1 x 9.5mm acoustic plasterboard

DnT,w + Ctr
51dB
LnT,W
49dB