

## Description

Soundis dry ScreedPanel 28 PF is a composite panel for acoustic flooring applications, consisting of an upper surface of 18mm ultra high density reinforced cement fibre panel factory bonded to a 10mm polyester fibre. These dry fit screed replacement panels reduce floor height and save on drying times over traditional screeds.

Soundis dry ScreedPanel 28 PF is ideally suited for acoustic flooring applications where high levels of both airborne and impact and airborne sound performance are required; such as residential, care homes and student accommodation schemes.



## Technical Properties

<b>Panel Dimensions</b>	600mm (W) x 1200mm (L) x 18mm (H)
<b>Panel m<sup>2</sup></b>	0.72 m <sup>2</sup> Per Panel
<b>Panels Per Pallet</b>	62 Panels (44.64 m <sup>2</sup> )
<b>Weight</b>	24.5 kg/m <sup>2</sup> - 17.64 kg Per Panel
<b>Pallet Dimensions</b>	1200mm (W) x 1200mm (L) x 1050mm (H)
<b>Pallet Weight</b>	1108 kg
<b>Density</b>	1350 kg/m <sup>3</sup>
<b>Thermal Expansion Coefficient</b>	0.005 mm/mk
<b>Thermal Conductivity</b>	0.22 W/mK
<b>Fire Performance</b>	A1 (as per EN13051-1)
<b>Water Impermeability</b>	Impermeable according to EN 12467

## Key Benefits



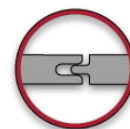
**Can Be Laid Directly Without Decoupling Mat**



**Non-combustible**



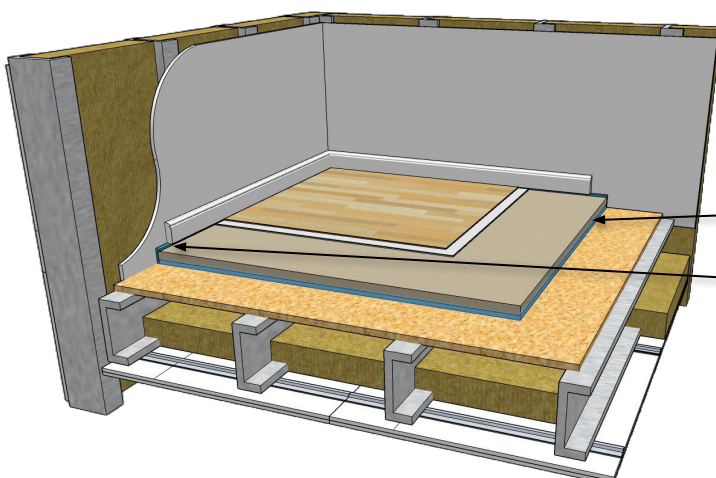
**High Density**



**T&G No Screws Required**



**Impervious To Water**

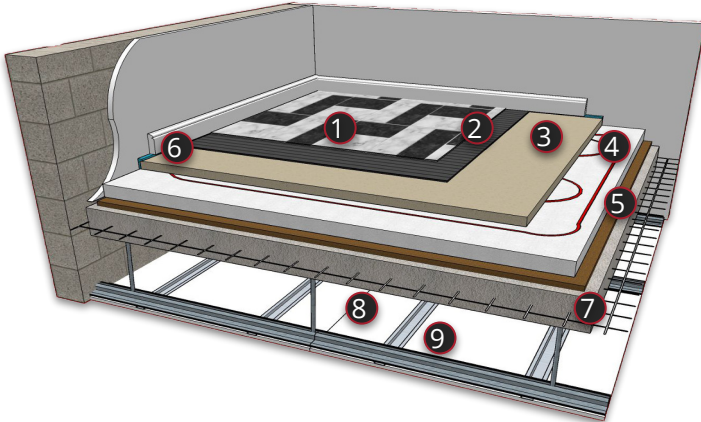


Soundis ScreedPanel 28PF

L Shaped Flanking Strip

## Typical Acoustic Performances

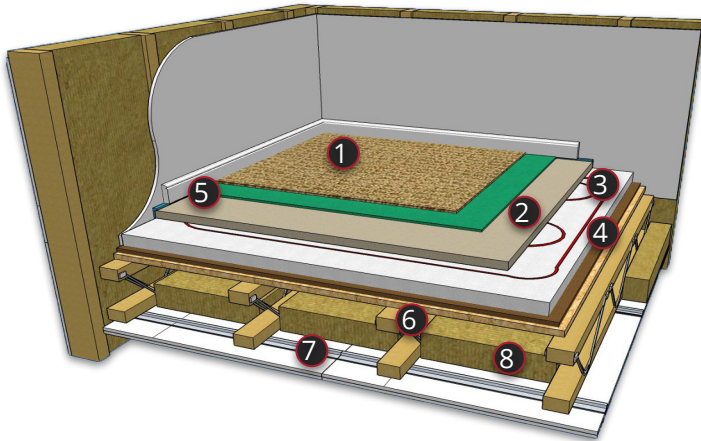
Manufactured By Soundis



### Concrete Insitu Floor

1. Ceramic Tiles
2. Electric UFH cables set in tile adhesive
3. Soundis Dry ScreedPanel 18
4. Routed UFH insulation
5. WF or MF resilient layer
6. L Shaped Flanking Strip
7. 200mm Reinforced insitu concrete slab
8. MF ceiling (min 100mm void)
9. 1 x 9.5mm acoustic plasterboard

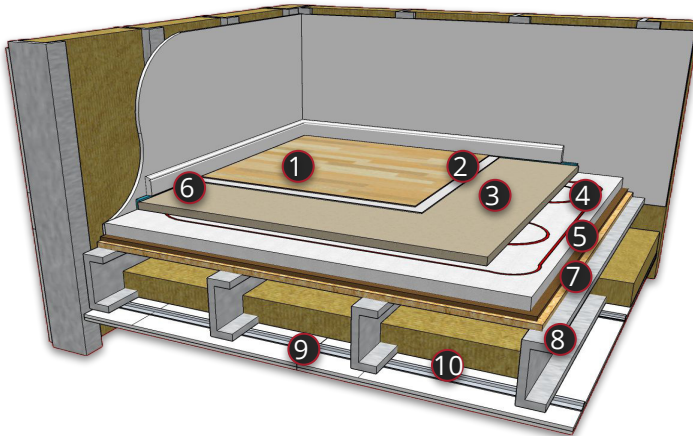
DnT,w + Ctr	
51 dB	
LnT,W	LnT,W
50dB (WF)	47dB (MF)
ΔLw	ΔLw
19dB (WF)	22dB (MF)



### Timber Joisted Floor

1. Carpet & Underlay
2. Soundis Dry ScreedPanel 18
3. Routed UFH insulation
4. WF or MF resilient layer
5. L Shaped Flanking Strip
6. 18mm (min) timber floor joists
7. 16mm resilient bars
8. 2 x 15mm acoustic plasterboard

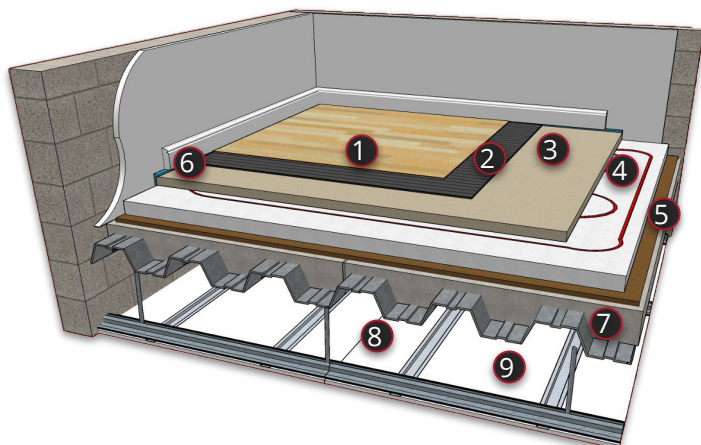
DnT,w + Ctr	
50dB	
LnT,W	LnT,W
59dB (WF)	56dB (MF)



### Steel Joisted Floor

1. LVT or sheet vinyl flooring
2. Self-levelling & adhesive layers
3. Soundis Dry ScreedPanel 18
4. Routed UFH insulation
5. WF or MF resilient layer
6. L Shaped Flanking Strip
7. 18mm (min) timber floor joists
8. 225mm (min) Steel floor joist
9. 16mm resilient bars
10. 2 x 15mm acoustic plasterboard

DnT,w + Ctr	
53dB	
LnT,W	LnT,W
58dB (WF)	55dB (MF)



### Profiled Metal Deck

1. Engineered timber flooring
2. Adhesive or decoupling layer
3. Soundis Dry ScreedPanel 18
4. Routed UFH insulation
5. WF or MF resilient layer
6. L Shaped Flanking Strip
7. 130mm concrete or profiled metal decking
8. MF ceiling (min 100mm void)
9. 1 x 9.5mm acoustic plasterboard

DnT,w + Ctr	
52dB	
LnT,W	LnT,W
50dB (WF)	47dB (MF)